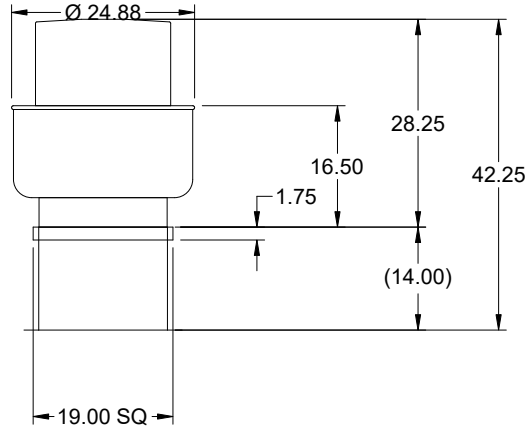


## Model: XCUE-099-VG

Direct Drive Upblast Centrifugal Roof Exhaust Fan



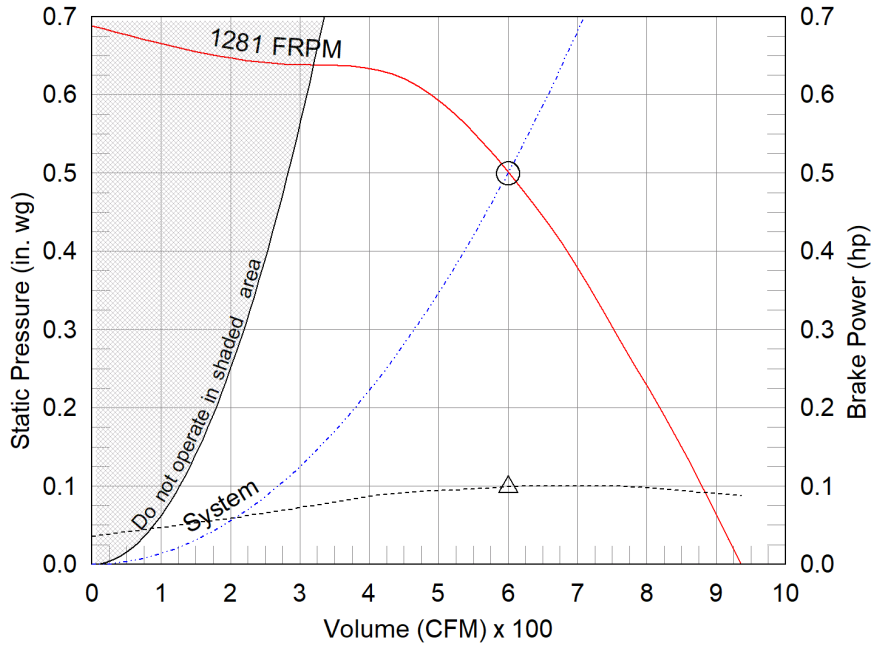
Dimensional	
Quantity	1
Weight w/o Acc's (lb)	38
Weight w/ Acc's (lb)	42
Weight w/ Acc's and Curb (lb)	63
Standard Curb Cap Size (in.)	19 x 19
Optional Damper (in.)	12 x 12
Roof Opening (in.)	15.5 x 15.5

Performance	
Requested Volume (CFM)	600
Actual Volume (CFM)	600
Total External SP (in. wg)	0.5
Fan RPM	1281
Operating Power (hp)	0.1
Elevation (ft)	709
Airstream Temp.(F)	70
Air Density (lb/ft3)	0.073
Tip Speed (ft/min)	3,752
Static Eff. (%)	48

Misc Fan Data	
Fan Eff. Index (FEI)	-
Outlet Velocity (ft/min)	469

Motor	
Motor Mounted	Yes
Size (hp)	1/4
Voltage/Cycle/Phase	115/60/1
Enclosure	TENV
Motor RPM	1725
Efficiency Rating	High
Windings	1
FLA (Amps)	2.85
Min. Circuit Ampacity (MCA)	4
Max. Overcurrent Protection (MOP)	15
Short Circuit Current Rtg (SCCR)	5 kA

OVERALL HEIGHT MAY BE GREATER DEPENDING ON MOTOR, ADAPTER, AND/OR HINGE BASE.



- △ Operating Bhp point
- Operating point at Total External SP
- Fan curve
- - - System curve
- - - Brake horsepower curve

### Notes:

All dimensions shown are in units of in.  
 \*NEC FLA, MCA and MOP are for reference only – based on tables 430.248 or 430.25 of National Electric Code 2020. Actual motor FLA may vary, for sizing thermal overload, consult factory.  
 MCA and MOP values shown only account for the motor, not accessories (damper actuator, field supplied VFD, etc).  
 LwA - A weighted sound power level, based on ANSI S1.4 dBA - A weighted sound pressure level, based on 11.5 dB attenuation per Octave band at 5 ft - dBA levels are not licensed by AMCA International  
 Sones - calculated using ANSI/AMCA 301 at 5 ft

### Sound Power by Octave Band

Sound Data	62.5	125	250	500	1000	2000	4000	8000	LwA	dBA	Sones
Inlet	71	70	67	61	58	57	52	43	65	53	6.7



## Model: XCUE-099-VG

Direct Drive Upblast Centrifugal Roof Exhaust Fan

### Standard Construction Features:

- Aluminum housing - Backward inclined aluminum wheel - Aluminum curb cap with prepunched mounting holes - Drain trough - Ball bearing motors (sizes 85-300 and all Vari Green), sleeve bearing motors (sizes 60-80) - Motor isolated on shock mounts - Corrosion resistant fasteners

### Selected Options & Accessories:

Motor - Vari-Green EC motor  
Control - Dial for balancing  
Standard Curb Cap Size - 19 Square  
UL/cUL 705 Listed - "Power Ventilators"  
Switch, NEMA-1, Toggle, Shipped with Unit  
Junction Box Mounted & Wired  
Foam Curb Seal (Factory Applied)  
Unit Warranty: 1 Yr (Standard)  
Damper Shipped Loose, BD-100-PB-12X12, Gravity Operated, Not Coated, Nominal Size

### Selected Sub Marks

*See individual submittals for full details*

GPI-19-12-G14

***The Vari-Green Motor included in this order has a 'Multi-Voltage' ability. The red wire on the motor is called a 'Voltage Doubler', and when it is connected the motor can be powered by 115V.***

***If the Red wire is disconnected, then the motor can be powered with 208-230/277V. The motor will leave the factory with the voltage doubler wired per the order.***

## Vari-Green Motor & Control Options

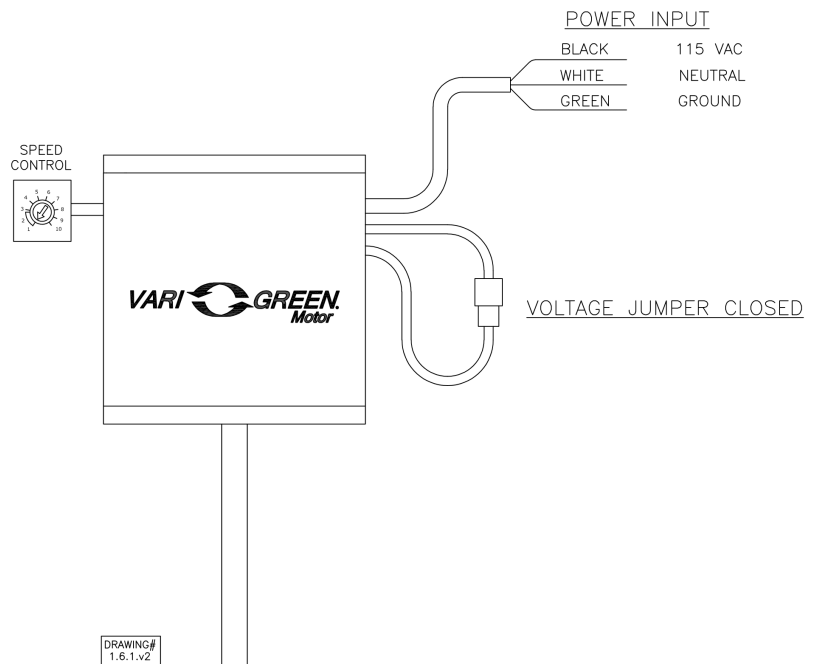
An EC motor that uses AC input power and internally converts it to DC power. Potentiometer (dial) mounted on the motor enclosure adjusts the speed (RPM) down 80%. Vari-Green motors feature a soft-start and inherent thermal and current protection built into each unit. Inrush current at start up is eliminated and the motor will automatically reduce speed or turn off if overloaded or it becomes too hot.

### Motor Configuration

Input Voltage: 115  
 Speed Reference: Dial on Motor  
 Permanent Dial: Yes

### Control Configuration

Control Type: N/A  
 Transformer: None



## Horizontal Mount Exhaust Damper

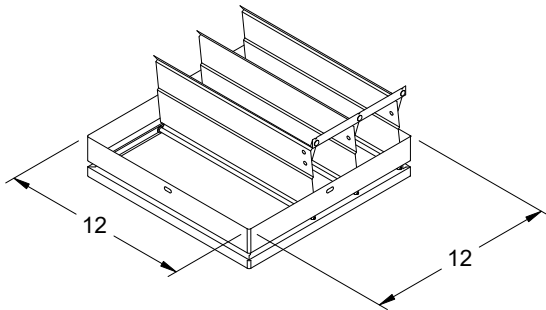
Model: BD-100

### Standard Construction Features:

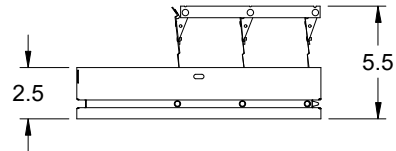
- Model BD-100 is a horizontal mount exhaust damper (air flow up) and is constructed of 24 ga galvanized steel with pre-punched mounting holes
- Damper blades are 0.016 in. roll formed aluminum with vinyl seals on the closing edge, and spring assisted for ease of opening
- Axle/bearing is constructed of fiberglass reinforced nylon



Greenheck Fan Corporation certifies that the models BD-100 shown herein is licensed to bear the AMCA Seal. The ratings shown are based on tests and procedures performed in accordance with AMCA Publication 511 and comply with the requirements of the AMCA Certified Ratings Program. The AMCA Certified Ratings Seal applies to Air Leakage and Air Performance Ratings.

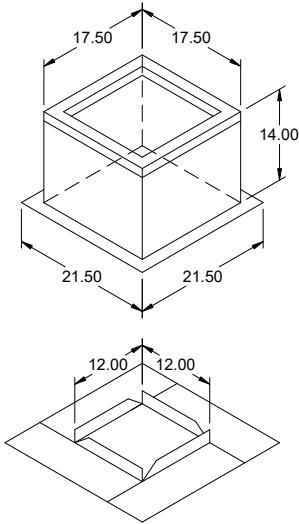


DAMPER



TYP. SECTION VIEW

Notes: All dimensions shown are in units of in.



## Model: GPI

### Roof Curb

#### Standard Construction Features:

- Roof Curb fits between the building roof and the fan mounted directly to the roof support structure - Constructed of either 18 ga galvanized steel or 0.064 in. aluminum - Straight Sided without a cant - 2 in. mounting flange - 3 lb density insulation - Height - Available from 12 in. to 42 in. as specified in 0.5 in. increments. Notes: - The maximum roof opening dimension should not be greater than the "Actual" top outside dimension minus 2 in.. - The minimum roof opening dimension should be at least 2.5 in. more than the damper dimension or recommended duct size. - The Roof Opening Dimension may or may not be the same as the Structural Opening Dimension. - Damper Tray is optional and must be specified. Tray size is same as damper size. - Security bars are optional and must be specified. Frames and gridwork are all 12 ga steel. Gridwork is welded to the frame and the frame is welded to the curb.

#### General

Tag	Qty	Model	Sizing Method	Undersizing (in.)	Weight (lb)	Shipped Assembled	Union Label
	1	GPI-19	Nominal	1.5	21	Yes	No Preference

#### Dimensions

Curb Height (in.)	Nominal Outside Width (in.)	Nominal Outside Length (in.)	Actual Outside Width (in.)	Actual Outside Length (in.)	Actual Inside Width (in.)	Actual Inside Length (in.)	Hinge Base Width* (in.)	Hinge Base Length* (in.)
14	19	19	17.5	17.5	14	14	18	18

\*May not be applicable

#### Damper Tray

Damper Tray Width (in.)	Damper Tray Length (in.)
12	12

#### Accessories

Material	Security Bars	Liner	Insulation (in.)	Insulation R Value
Galvanized	No	No	1	R4.3