

THIS DRAWING AND THE INFORMATION AND DATE CONTAINED HEREIN ARE THE CONFIDENTIAL AND PROPRIETARY PROPERTY OF DUKE MANUFACTURING CO., AND MAY NOT BE REPRODUCED OR DISCLOSED FOR ANY PURPOSE, WITHOUT THE WRITTEN PERMISSION OF DUKE MANUFACTURING CO.



Your Solutions Partner
 ©2017 Duke Manufacturing Co.
DUKE MANUFACTURING COMPANY
 2305 North Broadway
 St. Louis, MO 63102
 Ph (314) 231-1130
 Fax (314) 231-5074

STANDARD SERVING SYSTEM PRACTICES

SOLID SURFACE TOPS AND TRAY SLIDES

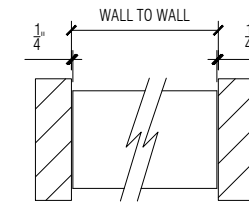
- ALL SOLID SURFACE TOPS AND TRAY SLIDES, WITH FIELD SEAMS, **WILL SHIP LOOSE**, WHEN SPANNING MORE THAN ONE UNIT.
- SOLID SURFACE TOPS AND TRAY SLIDES SPECIFIC TO SINGLE UNIT WILL SHIP INSTALLED.
- SOLID SURFACE TOPS AND TRAY SLIDES REQUIRE A **CERTIFIED** INSTALLER, SPECIFIC TO THE BRAND, TO SEAM THE UNITS IN THE FIELD DURING PRODUCT INSTALLATION.

STAINLESS STEEL TOPS AND TRAY SLIDES

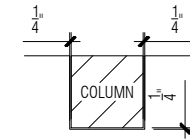
- THE MAXIMUM CONTINUOUS STAINLESS STEEL TOP LENGTH IS 144" [12'-0"], BEFORE REQUIRING A BOLTED OR WELDED FIELD JOINT.
- THE MAXIMUM CONTINUOUS STAINLESS STEEL TRAY SLIDE LENGTH IS 144" [12'-0"], BEFORE REQUIRING A BOLTED OR WELDED FIELD JOINT.
- BOLTED OR WELDED FIELD JOINTS ARE REQUIRED, AT ALL MITERED TRAY SLIDE CORNERS.

ALLOWANCE FOR FIELD CONDITIONS

- FACTORY TO ALLOW 1/4" AT ALL WALLS, COLUMNS, AND PASS THROUGH WINDOWS FOR FIT. **(SEE WALL TO WALL AND COLUMN EXAMPLES)**



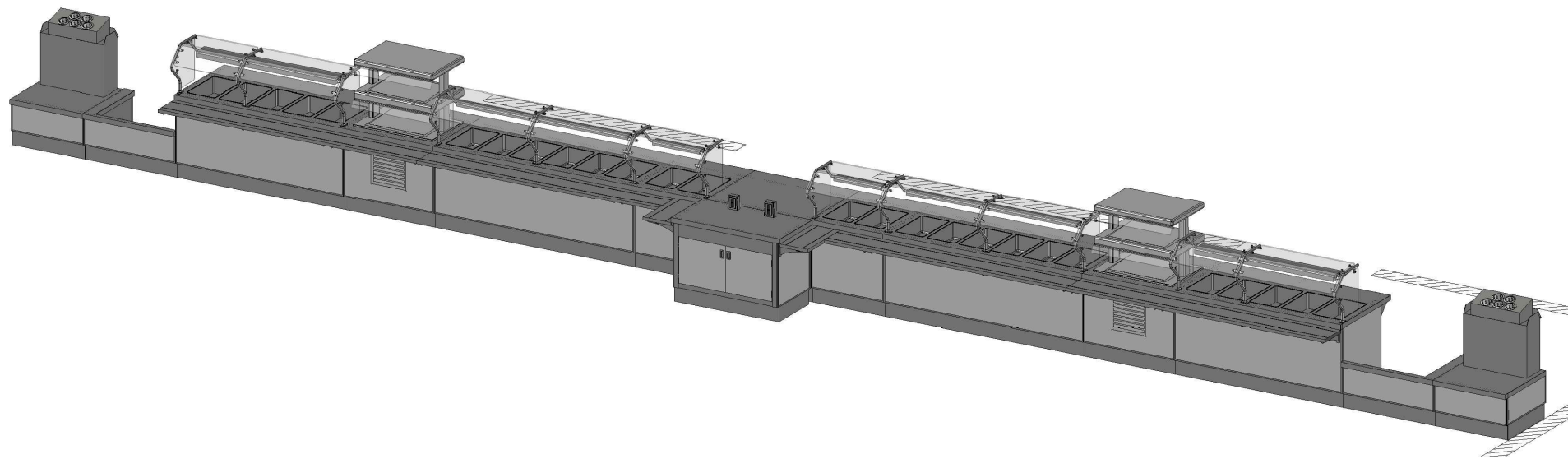
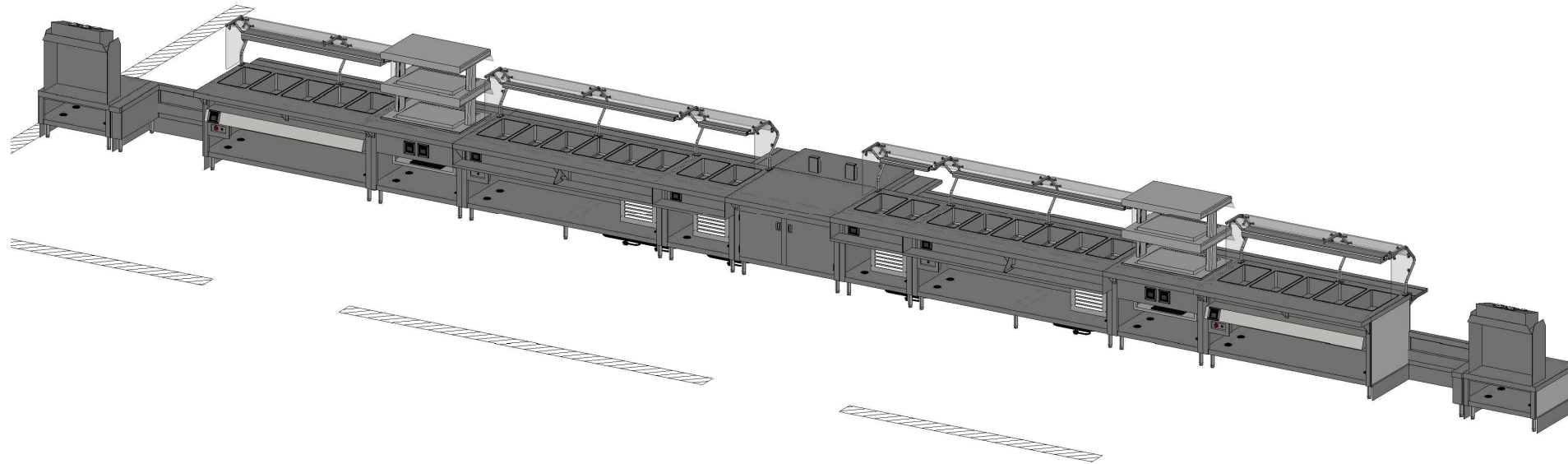
WALL TO WALL EXAMPLE



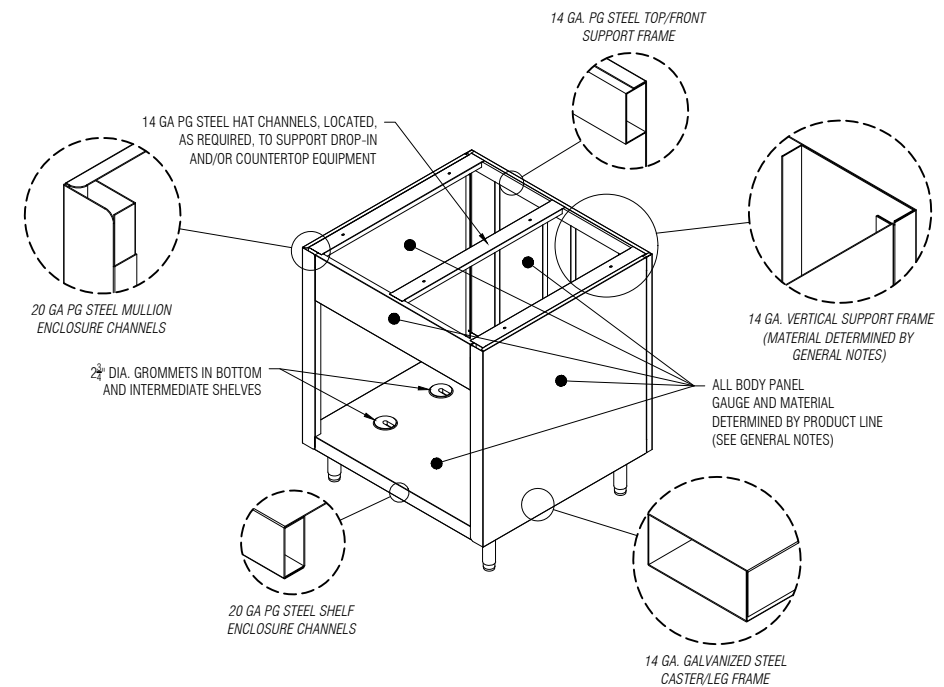
COLUMN EXAMPLE

ELECTRICAL

- ALL 15 AMP (NEMA #5-15R) AND 20 AMP (NEMA #5-20R) RECEPTACLES SHALL BE GFCI (GROUND FAULT CIRCUIT INTERRUPTER) TYPE RECEPTACLES PER DUKE MANUFACTURING STANDARD. **UNLESS SPECIFICALLY NOTED OTHERWISE** ON THE DRAWING. **(SEE SYMBOL LEGEND)**



3D VIEWS



STANDARD CHANNEL BODY CONSTRUCTION

SYMBOL LEGEND

DESCRIPTION	SYMBOL	DESCRIPTION	SYMBOL	DESCRIPTION	SYMBOL
SIMPLEX RECEPTACLE		DUPLEX GFCI RECEPTACLE (NEMA 5-15R & 5-20R ONLY)		ELEC. CORD AND PLUG	
KICKPLATE LOCATION		LAMINATE LOCATION		DECOR PANEL LOCATION	
EQUIPMENT TAG		FIELD JOINT LOCATION		2 3/8" GROMMET LOCATION	
VIEW TAG	VIEW NUMBER: PLAN SCALE:	VIEW NAME:	VIEW SCALE:	COMPRESSOR WITH REMOVABLE GRILLE	
VIEW ARROWS		VIEW NUMBER:	PAGE NUMBER:		

SUBMITTAL

APPROVAL OF FABRICATION: _____
 REVIEW AND RECORD FOR APPROVAL: _____
 DATE: _____
 OF THE PROJECT: _____
 THE DRAWING MUST BE SIGNED AND RETURNED TO DUKE MANUFACTURING PRIOR TO BEING RELEASED FOR FABRICATION. MAKE PRINT NOTES ARE CHANGING AND EQUIPMENT SHALL NOT BE ASSEMBLED OR FABRICATED UNTIL SUCH TIME AS THEY ARE CONFIRMED. APPROVAL OF THIS DRAWING INDICATES THAT PURCHASER HAS REVIEWED ALL DETAILS OF DRAWING INCLUDING ELECTRICALS, MECHANICALS AND FINISHES.

REV.	DATE	BY
A	3/13/2023	CBG
B	4/20/2023	MAC

DESIGNED FOR: **KINGSTON HS/MS**
 DESIGNED BY: **PARAGON MARKETING**

DRAWN BY: **CBG**
 ESTIMATOR: **P. DOMBLE**
 PURCHASE ORDER #: **N/A**
 SALES ORDER: **N/A**
 DATE: **03/01/2023**
 DRAWING NO.: **SD-144667**
 SHEET: **6 1**

GENERAL NOTES

THIS DRAWING AND THE INFORMATION AND DATE CONTAINED HEREIN ARE THE CONFIDENTIAL AND PROPRIETARY PROPERTY OF DUKE MANUFACTURING CO., AND MAY NOT BE REPRODUCED OR DISCLOSED FOR ANY PURPOSE, WITHOUT THE WRITTEN PERMISSION OF DUKE MANUFACTURING CO.

THE FOLLOWING MUST BE VERIFIED PRIOR TO CONSTRUCTION

- ANY DECOR COLOR CHOICES INCLUDING LAMINATE, PAINT COLOR, OR CUSTOM DECOR FEATURES, IF APPLICABLE
- ALL ELECTRICAL VOLTAGE AND PHASE OF DUKE HOT FOOD UNITS AND BUYOUT EQUIPMENT IF APPLICABLE
- ALL CRITICAL FIELD DIMENSION IF ANY AS INDICATED IN PLAN VIEW.

THURMADUKE SERVING SYSTEMS

TOPS

14 GA. STAINLESS STEEL CONTINUOUS EXTENDED TOPS WITH FIXED BRACKETS.

TOPS (FOR ITEM #1A, #2A, #1B & #2B)

14 GA. STAINLESS STEEL TOPS.

BODIES & INTERIORS

14 GA. PAINT GRIP STEEL FRAME/SUPPORTS W/20 GA. PAINT GRIP STEEL ENCLOSURE CHANNELS, BODY PANELS AND INTERIOR SHELVES W/ POWDER COAT FINISH.

*POWDER COAT COLOR:..... VERIFY

*****LAMINATE GRAIN (IF ANY) RUNS HORIZONTAL*****

*LAMINATE BRAND:..... VERIFY

*LAMINATE ID NUMBER:..... VERIFY

*LAMINATE COLOR NAME:..... VERIFY

LEGS

6" HIGH, 1 5/8"Ø STAINLESS STEEL TUBULAR LEGS WITH ADJUSTABLE FEET.

KICKPLATES

HEAVY GAUGE STAINLESS STEEL KICK PLATES LOCATED WHERE INDICATED BY SCHEDULE.

TRAYSLIDES

16 GA. STAINLESS STEEL SOLID TRAY SLIDES WITH (2) DIE FORMED RUBBING TRACKS ON 10 GA. STAINLESS STEEL FIXED BRACKETS. WITH 2" TURN UP AT REAR, CONTINUOUS STYLE.

BREATHGUARDS (TS400 SERIES)

1" DIA. STAINLESS STEEL TUBING LEGS. CLEAR GLASS SHELVES, PROTECTORS & END ENCLOSURES.

****BREATH GUARD POSTS ARE NOT TO BE USED AS PUSH HANDLES. DUKE MANUFACTURING DOES NOT ACCEPT RESPONSIBILITY FOR FOOD SHIELDS COMING LOSE IN THE FIELD DUE TO MISUSE.****

DUKE EQUIPMENT

Item Tag	Quantity	Model Number	Description	Voltage	Phase	Watts	Amps	NEMA # Int'l. Conn. Final Conn.	Cord length	Gas Type
1A	1	TTS-32PG	TRAY STAND UNIT W/ T73 SILVERWARE DISPENSER	-	-	-	-	NEMA#	Cord	Gas Type
2A	1	TTS-32PG	TRAY STAND UNIT W/ T73 SILVERWARE DISPENSER	-	-	-	-	NEMA#	Cord	Gas Type
1B	1	TS380-PG	SKELETON UNIT	-	-	-	-	NEMA#	Cord	Gas Type
2B	1	TS380-PG	SKELETON UNIT	-	-	-	-	NEMA#	Cord	Gas Type
1C	1	TWHF-74PG	WATERLESS HOT FOOD WELL	VER	VER	VER	VER	NEMA#	Cord	Gas Type
1Ca	1	TS482-74	FIXED GLASS SNEEZE GUARD SELF SERVE W/ SINGLE OVERSHELF LED LIGHTS & HEAT	120	1	1080	9	NEMA#	Cord	Gas Type
2C	1	TWHF-74PG	WATERLESS HOT FOOD WELL	VER	VER	VER	VER	NEMA#	Cord	Gas Type
2Ca	1	TS482-74	FIXED GLASS SNEEZE GUARD SELF SERVE W/ SINGLE OVERSHELF LED LIGHTS & HEAT	120	1	1080	9	NEMA#	Cord	Gas Type
1D	1	TST-46PG	SOLID TOP UNIT	-	-	-	-	NEMA#	Cord	Gas Type
2D	1	TST-46PG	SOLID TOP UNIT	-	-	-	-	NEMA#	Cord	Gas Type
D-1	2	HF35-2-HFL-HFL	2-TIER HOT/FROST MERCHANDISER FULL FUNCTION SERVICE ON BOTH TIERS WITH DISPLAY LIGHT	208	1	1956	9.3	NEMA#	Cord	Gas Type
1E	1	TFCP-88PG-N7	FLUSHMOUNT COLD PAN	120	1	576	4.9	NEMA#	Cord	Gas Type
1F	1	TFCP-32PG-N7	FLUSHMOUNT COLD PAN	120	1	432	3.7	NEMA#	Cord	Gas Type
1a	1	TS482-MOD	FIXED GLASS SNEEZE GUARD SELF SERVE W/ SINGLE OVERSHELF LED LIGHTS	120	1	60	0.50	NEMA#	Cord	Gas Type
2E	1	TFCP-88PG-N7	FLUSHMOUNT COLD PAN	120	1	576	4.9	NEMA#	Cord	Gas Type
2F	1	TFCP-32PG-N7	FLUSHMOUNT COLD PAN	120	1	432	3.7	NEMA#	Cord	Gas Type
2a	1	TS482-MOD	FIXED GLASS SNEEZE GUARD SELF SERVE W/ SINGLE OVERSHELF LED LIGHTS	120	1	60	0.50	NEMA#	Cord	Gas Type
1G	1	TST-46PG	SOLID TOP UNIT **PANEL BOX**	-	-	-	-	NEMA#	Cord	Gas Type
1H	1	309-25PG	SOLID TOP UNIT	-	-	-	-	NEMA#	Cord	Gas Type

DUKE EQUIPMENT

Item Tag	Quantity	Model Number	Description	Voltage	Phase	Watts	Amps	NEMA # Int'l. Conn. Final Conn.	Cord Length	Gas Type
#	-	-	-	-	-	-	-	NEMA#	Provided By	Installed By

BUY-OUT EQUIPMENT

Item Tag	Quantity	Model Number	Description	Voltage	Phase	Watts	Amps	NEMA # Int'l. Conn. Final Conn.	Provided By	Installed By
#	-	-	-	-	-	-	-	NEMA#	Provided By	Installed By



Your Solutions Partner
©2017 Duke Manufacturing Co.
DUKE MANUFACTURING COMPANY
2305 North Broadway
St. Louis, MO 63102
Ph (314) 231-1130
Fax (314) 231-5074

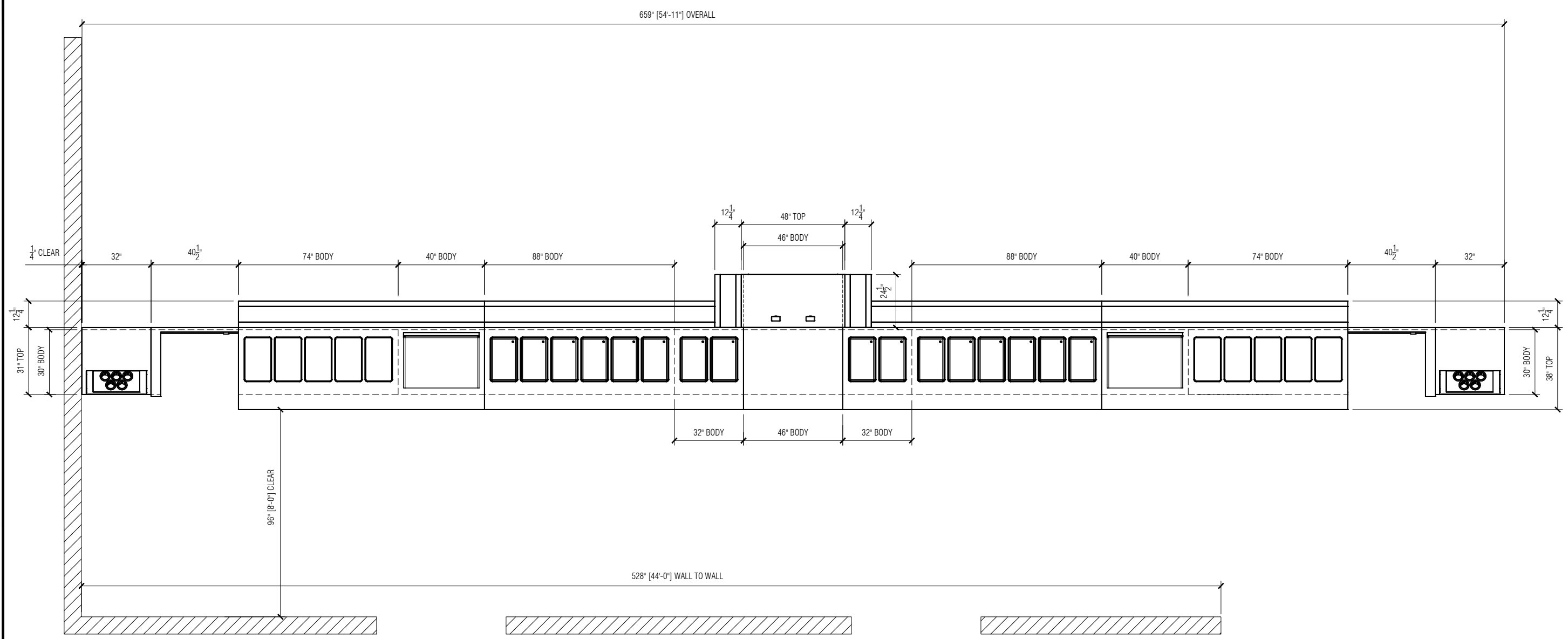
SUBMITTAL
APPROVED FOR FABRICATION: _____
REVISED AND RESUBMITTED FOR APPROVAL: _____
DATE: _____
DESIGNED BY: _____
CHECKED BY: _____
DATE: _____
THE DRAWING MUST BE SIGNED AND RETURNED TO DUKE MANUFACTURING PRIOR TO BEING RELEASED FOR FABRICATION. ANY CHANGES TO THIS DRAWING MUST BE APPROVED BY DUKE MANUFACTURING. MAKE SURE ALL DIMENSIONS ARE CORRECT AND ALL MATERIALS ARE AS SPECIFIED. MAKE SURE ALL DIMENSIONS ARE CORRECT AND ALL MATERIALS ARE AS SPECIFIED. MAKE SURE ALL DIMENSIONS ARE CORRECT AND ALL MATERIALS ARE AS SPECIFIED. MAKE SURE ALL DIMENSIONS ARE CORRECT AND ALL MATERIALS ARE AS SPECIFIED.

REV.	DATE	BY
A	3/13/2023	CBG
B	4/20/2023	MAC

DESIGNED FOR: **KINGSTON HS/MS**
DESIGNED BY: **PARAGON MARKETING**
DRAWN BY: **CBG**
ESTIMATOR: **P. DOMBLE**
PURCHASE ORDER #: **N/A**
SALES ORDER: **N/A**
DATE: **03/01/2023**
DRAWING NO.: **SD-144667**
SHEET: **2**
OF: **6**

NOTE:
SNEEZE GUARDS NOT
SHOWN IN PLAN VIEW

Duke
Your Solutions Partner
©2017 Duke Manufacturing Co.
**DUKE
MANUFACTURING
COMPANY**
2305 North Broadway
St. Louis, MO 63102
Ph (314) 231-1130
Fax (314) 231-5074



1 PLAN VIEW
3 1/4" = 1'-0"

SUBMITTAL
APPROVED FOR FABRICATION: _____
DATE: _____
DESIGNED BY: _____
DRAWN BY: _____
ESTIMATOR: _____
PURCHASE ORDER #: _____
SALES ORDER: _____
DATE: _____
DRAWING NO.: _____
SHEET: _____ OF _____

REV.	DATE	BY
A	3/13/2023	CBG
B	4/20/2023	MAC

DESIGNED FOR:
KINGSTON HS/MS

DESIGNED BY:
PARAGON MARKETING

DRAWN BY:
CBG

ESTIMATOR:
P. DOMBLE

PURCHASE ORDER #:
N/A

SALES ORDER:
N/A

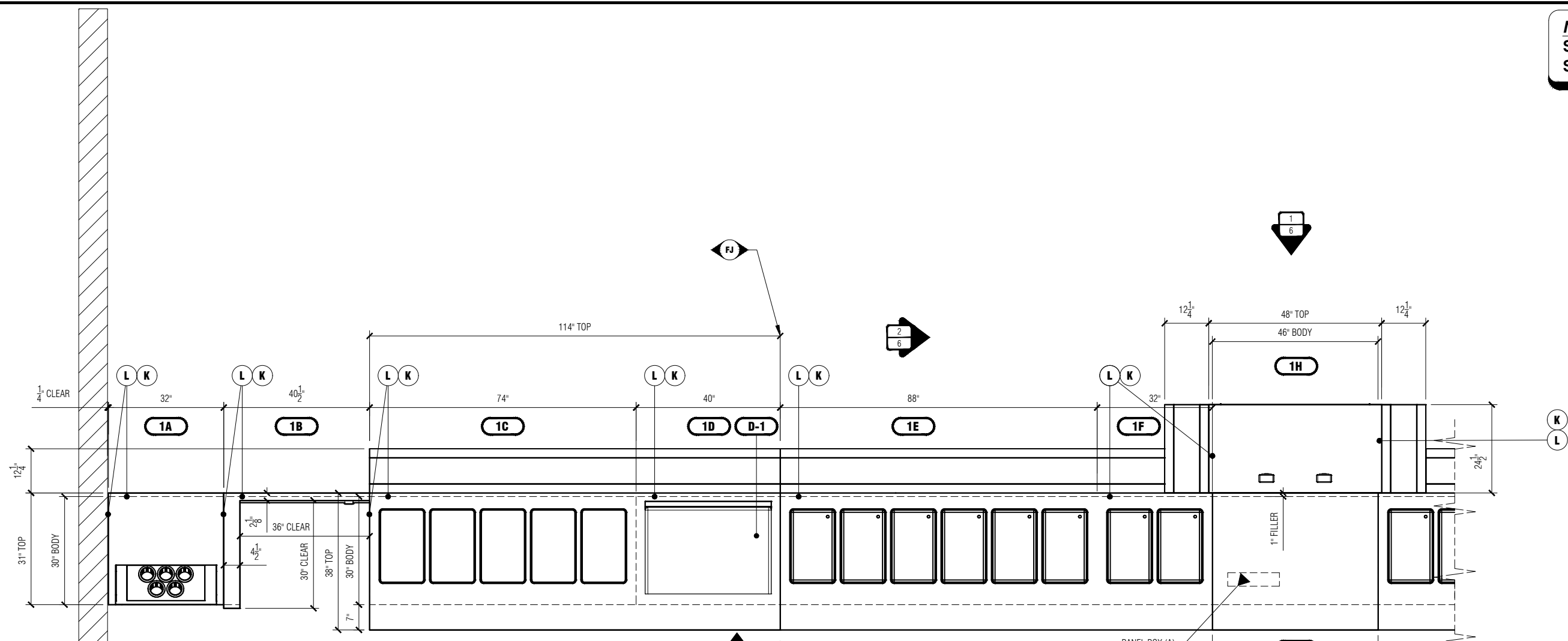
DATE:
03/01/2023

DRAWING NO.:
SD-144667

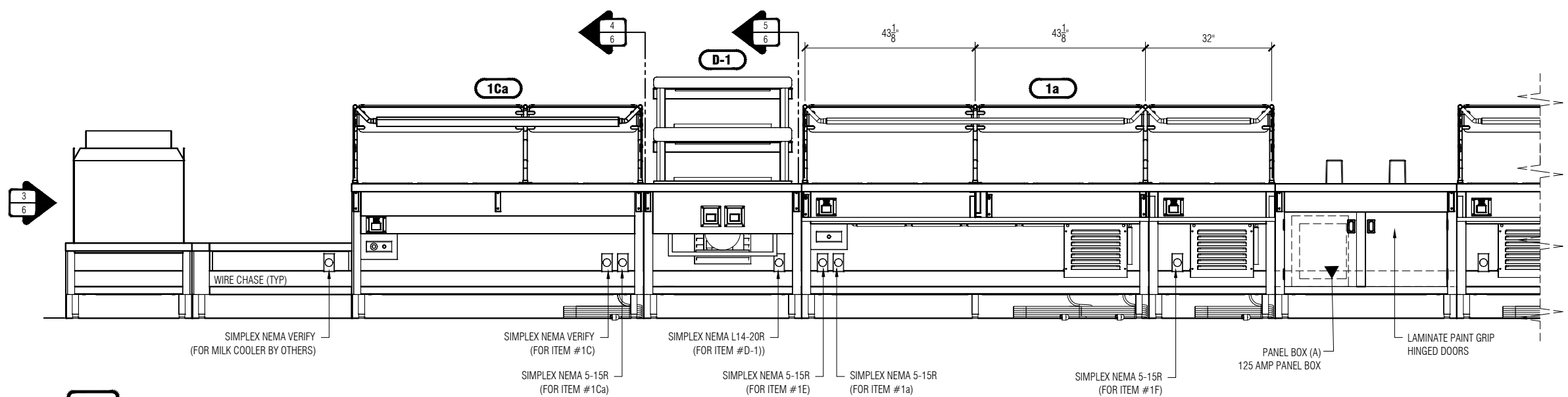
SHEET:
6 **3**

NOTE:
SNEEZE GUARDS NOT
SHOWN IN PLAN VIEW

Duke
Your Solutions Partner
©2017 Duke Manufacturing Co.
**DUKE
MANUFACTURING
COMPANY**
2305 North Broadway
St. Louis, MO 63102
Ph (314) 231-1130
Fax (314) 231-5074



1 PLAN VIEW
4 3/8" = 1'-0"



2 ELEVATION VIEW
4 3/8" = 1'-0"

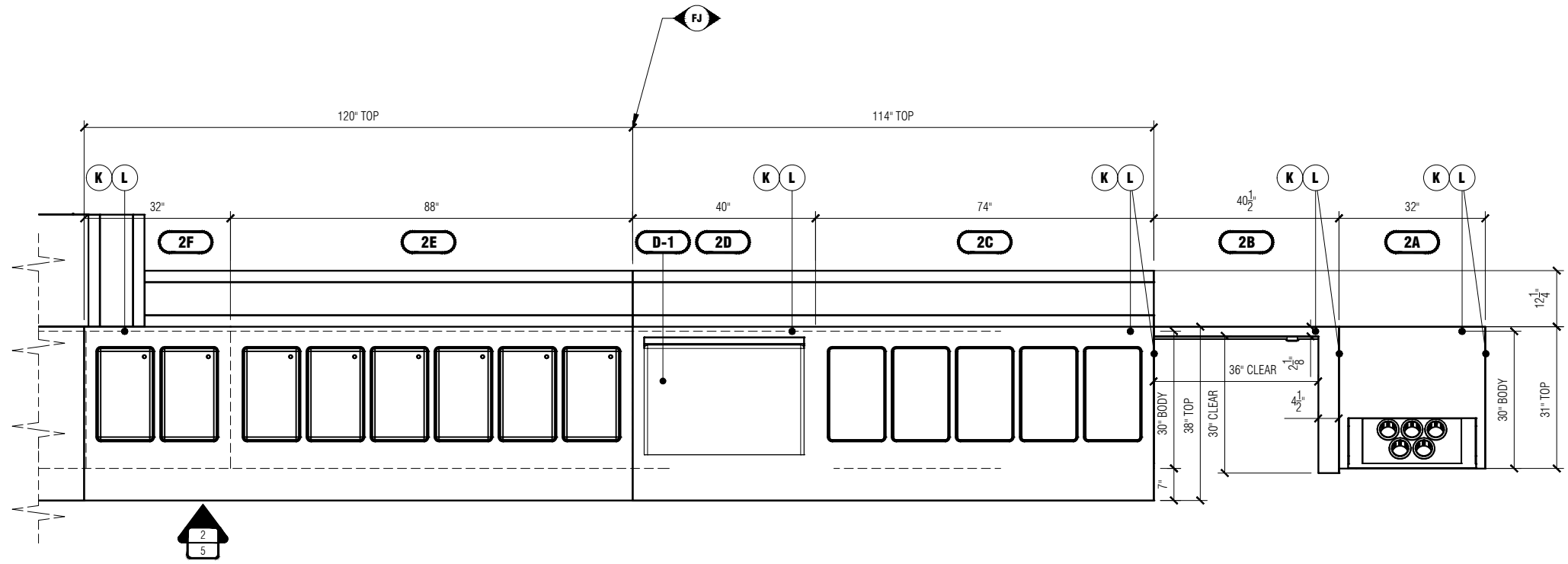
SUBMITTAL
APPROVED FOR FABRICATION: _____
REVISED AND RESUBMITTED ON: _____
DATE: _____
DRAWN BY: _____
CHECKED BY: _____
DATE: _____
DESIGNED BY: _____
DATE: _____
THE DRAWING MUST BE SIGNED AND RETURNED TO DUK MANUFACTURING PRIOR TO BE RELEASED FOR FABRICATION. ANY CHANGES TO THE DRAWING MUST BE APPROVED BY DUK MANUFACTURING. MAKE THAT NOTES ARE ANY OF THE DRAWING DIMENSIONS THAT PURCHASER MUST BE ADVISED. ALL DIMENSIONS ARE UNLESS OTHERWISE SPECIFIED.
ALL RIGHTS RESERVED. INCLUDING ALL PATENTS, TRADEMARKS, AND SERVICE MARKS.

REV.	DATE	BY
A	3/13/2023	CBG
B	4/20/2023	MAC

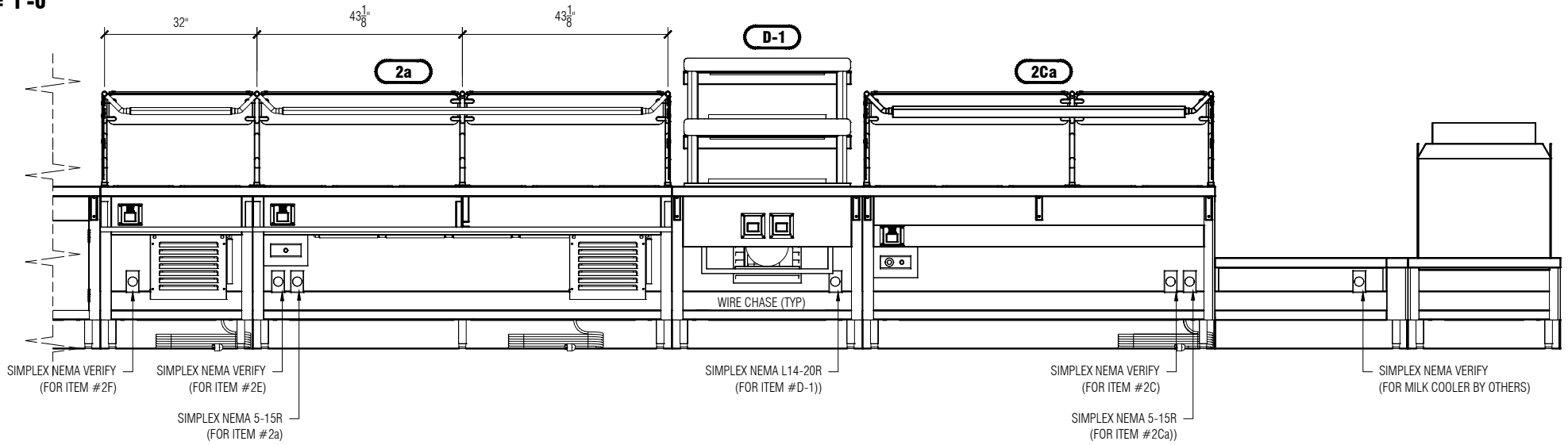
DESIGNED FOR: **KINGSTON HS/MS**
DESIGNED BY: **PARAGON MARKETING**
DRAWN BY: **CBG**
ESTIMATOR: **P. DOMBLE**
PURCHASE ORDER #: **N/A**
SALES ORDER: **N/A**
DATE: **03/01/2023**
DRAWING NO.: **SD-144667**
SHEET: **4**
OF: **6**

NOTE:
SNEEZE GUARDS NOT
SHOWN IN PLAN VIEW

Duke
Your Solutions Partner
©2017 Duke Manufacturing Co.
**DUKE
MANUFACTURING
COMPANY**
2305 North Broadway
St. Louis, MO 63102
Ph (314) 231-1130
Fax (314) 231-5074



1 PLAN VIEW
5 3/8" = 1'-0"

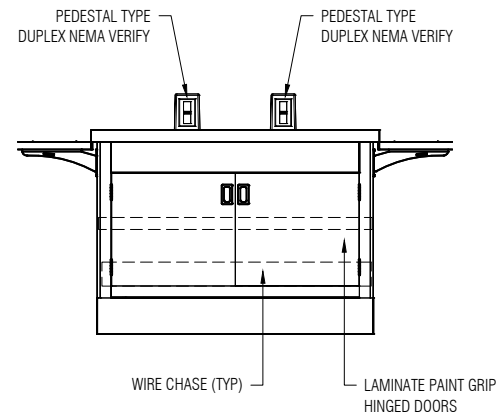


2 ELEVATION VIEW
5 3/8" = 1'-0"

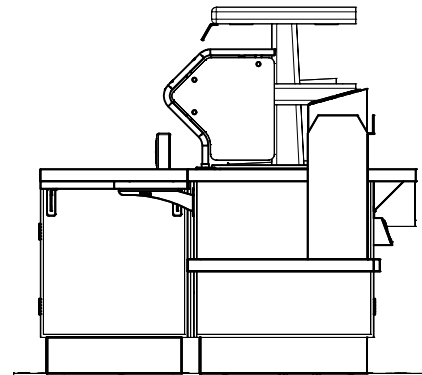
SUBMITTAL
APPROVED FOR FABRICATION: _____
DATE: _____
REVISED AND RESUBMITTED ON: _____
DATE: _____
DESIGNED BY: _____
DATE: _____
CHECKED BY: _____
DATE: _____
ALL RIGHTS RESERVED. NO PARTS TO BE REPRODUCED OR TRANSMITTED IN ANY FORM OR BY ANY MEANS, ELECTRONIC OR MECHANICAL, INCLUDING PHOTOCOPYING, RECORDING, OR BY ANY INFORMATION STORAGE AND RETRIEVAL SYSTEM.

REV.	DATE	BY
A	3/13/2023	CBG
B	4/20/2023	MAC

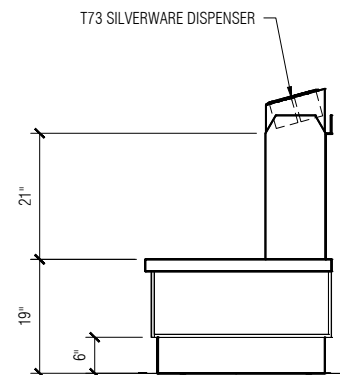
DESIGNED FOR: **KINGSTON HS/MS**
DESIGNED BY: **PARAGON MARKETING**
DRAWN BY: **CBG**
ESTIMATOR: **P. DOMBLE**
PURCHASE ORDER #: **N/A**
SALES ORDER: **N/A**
DATE: **03/01/2023**
DRAWING NO.: **SD-144667**
SHEET: **5**
OF: **6**



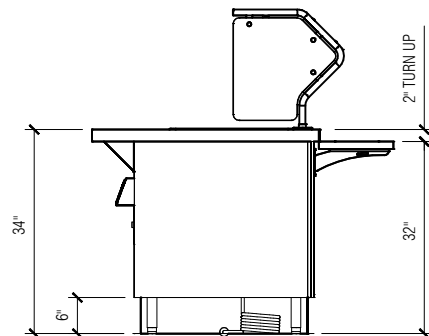
1 ELEVATION VIEW
6 3/8" = 1'-0"



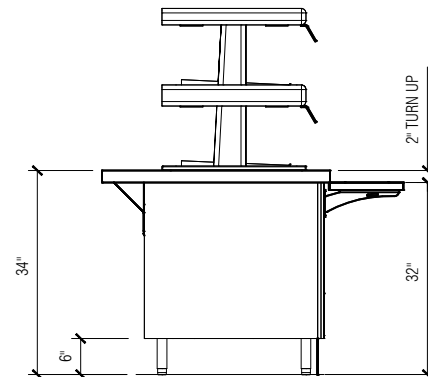
2 END VIEW
6 3/8" = 1'-0"



3 END VIEW
6 3/8" = 1'-0"



4 END VIEW
6 3/8" = 1'-0"



5 END VIEW
6 3/8" = 1'-0"



Your Solutions Partner
©2017 Duke Manufacturing Co.
DUKE MANUFACTURING COMPANY
2305 North Broadway
St. Louis, MO 63102
Ph (314) 231-1130
Fax (314) 231-5074

SUBMITTAL

APPROVED FOR FABRICATION: _____
REVISED AND READY FOR APPROVAL: _____
DATE: _____
DESIGNED BY: _____
DRAWN BY: _____

THE DRAWING MUST BE SIGNED AND RETURNED TO DUK MANUFACTURING PRIOR TO BEING RELEASED FOR FABRICATION. ANY CHANGES TO THE DRAWING MUST BE MADE IN WRITING AND APPROVED BY DUK MANUFACTURING. MAKE THAT NOTES ARE MADE OF ANY CHANGES AND EQUIPMENT WILL BE AS FOLLOWS: FABRICATION SHALL BE MADE AS PER THE DRAWING UNLESS OTHERWISE NOTED. ALL DIMENSIONS ARE IN INCHES UNLESS OTHERWISE NOTED. ALL DIMENSIONS ARE TO FACE UNLESS OTHERWISE NOTED.

REV.	DATE	BY
A	3/13/2023	CBG
B	4/20/2023	MAC

DESIGNED FOR: **KINGSTON HS/MS**
DESIGNED BY: **PARAGON MARKETING**

DRAWN BY: **CBG**
ESTIMATOR: **P. DOMBLE**
PURCHASE ORDER #: **N/A**
SALES ORDER: **N/A**
DATE: **03/01/2023**
DRAWING NO.: **SD-144667**
SHEET: **6**